

Anatomy: Finger, Thumb, Hand
 Sub-Anatomy: 1.5T

- Exams
 - Routine

ORDERABLE- Finger, Thumb, Upper extremity, Hand

Coil: Wrist or small surface Coil

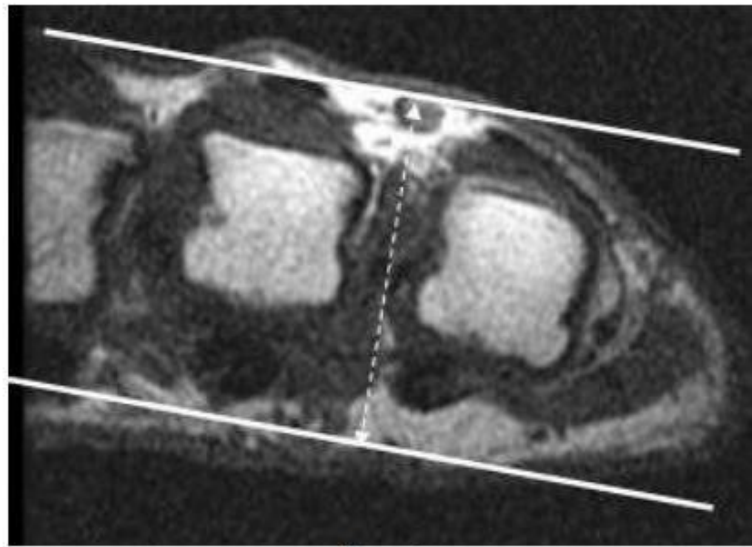
SEQUENCE - BASICS																	
PLANE	SEQ	Slice thickness (mm)	Misc / Comment	M	R	%	Gap (mm)	Voxel size (mm)	TR	TE	F A/ TI	Nex Avg Acq	NS	ETL Turbo Factor	Phase Encode	Scan TIME (min)	Pixel Shift BW-kHz
ROUTINE																	
	3 plane scout		Only GRE														
1	Ax T2 SPAIR	3.0 x0.4x0.5					0.3		4000	50-65							
2	Ax T1	3.0 x0.4x0.5					0.3		600	6-9							
3	Cor STIR	3.0 x0.4x0.5					0.3		4000	25-35							
4	Sag T2 FS	3.0 x0.4x0.5					0.3		4000	50-65							
5	Cor T1	3.0 x0.4x0.5					0.3		600	6-9							
6	Cor T2 Dixon	3.0 x0.4x0.5					0.3										
↓ OPTIONAL ↓																	
	Sag or Ax STIR	4 x0.5x0.6	Failed fat sat				0.5		4000	25-35							

Instructions: FOV and Coverage- Do only the region of interest in the FOV. If fingers, only do 1-3 fingers in the same FOV; If ordered hand- Image hand only from carpometacarpal joint to base of fingers. Add wrist separately if asked for. Don't do whole hand in one field of view. If pathology in distal phalanx or tuft of fingers, focus imaging FOV in that region.

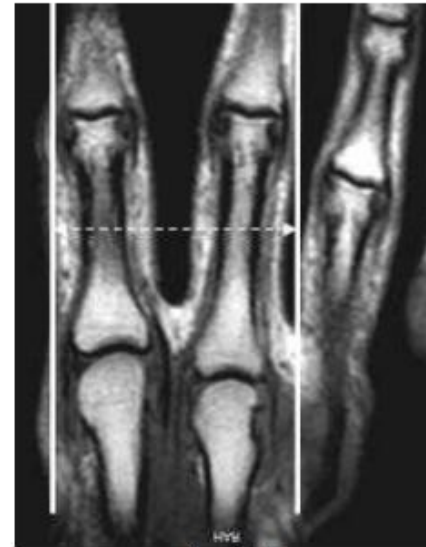
Others- Always put marker at the site of most pain, injury or swelling. If motion observed, stop the scan, instruct patient to lay still and repeat the sequence.



Axial



Coronal



Sagittal